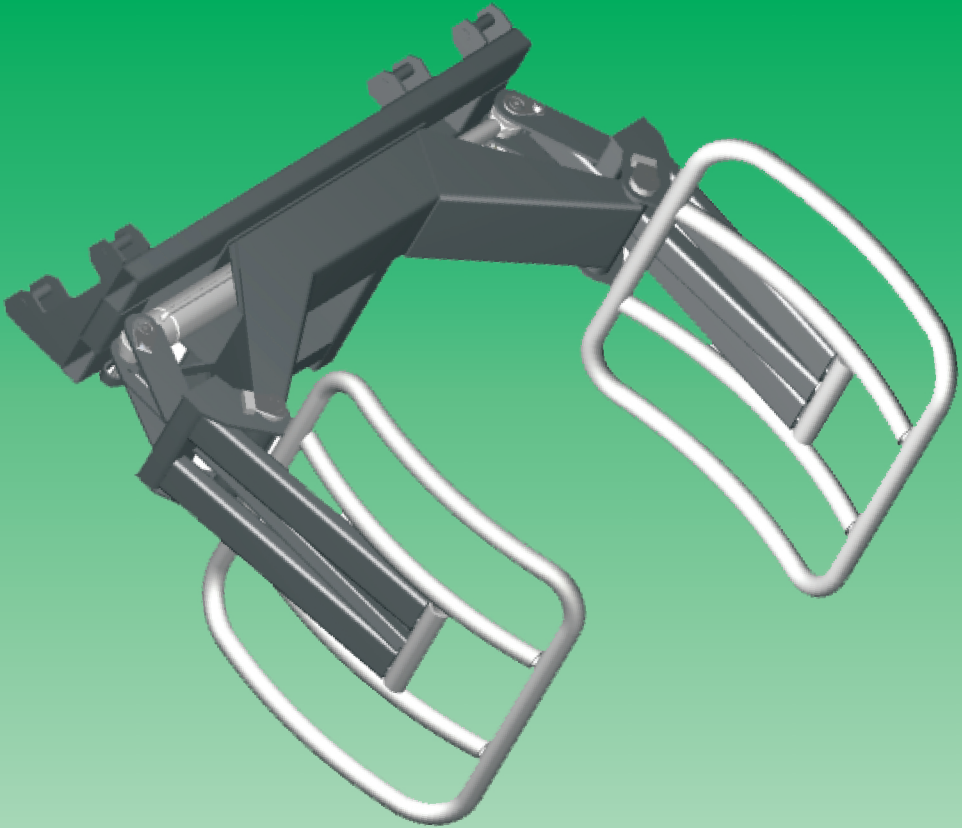


NOSIČ BALOV

BALE HANDLER



Nosič balov slúži najmä v poľnohospodárstve k jednoduchšej manipulácii s kruhovými balmi na stohovanie, ukladanie do radov, skladanie a nakladanie na dopravné prostriedky, prenášanie a pod. Čeluste sú prispôsobené tvaru balu

The bale handler attachment was designed for the agricultural market for stacking, depositing and manipulation and loading of bales. Claws form is radius for better snapping.

| | |
|-----------------------------------|--------------------|
| Typ / Type | 93 160 |
| Priemer balu / Bale diameter (mm) | 1200 - 1600 |
| Hmotnosť / Weight (kg) | 160 |